

The Blues

Key of "C"

sean-mackenzie.com

Scales

Blues

Regular pentatonic

Minor pentatonic



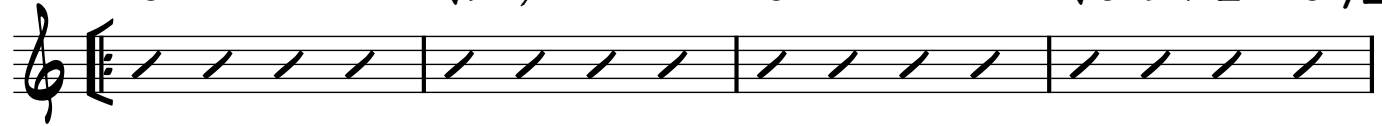
Traditional

C7

(F7)

C7

(C7 D_{mi}7 Eb°7 C7/E)



F7

C7



G7

(F7)

To Coda
for variations

C7

(G7)



Fine

⊕ vers.1

C7

C7/E F7

F#°7

1. C7/G Ab7 G7

D.C.

2. C7/G Db7 C7



Fine

⊕ vers.2

C7

C7/Bb

A°7

Ab6

1. C7/G Ab7 G7

D.C.

2. C7/G Db7 C7



Jazz

C7

F7

C7

(G_{mi}7 C7)



C7

(E_{mi}7b5)

C7/G)

F7

(F#°7

A7b9



Chord progression for a 4-measure phrase:

Measure 1	Measure 2	Measure 3	Measure 4
D _m 7	G7	C7 (E _m 7 ^{b5})	A7 (E ^b 7 ^{b5})
		D _m 7	G7 (D ^b 7 ^{b5})